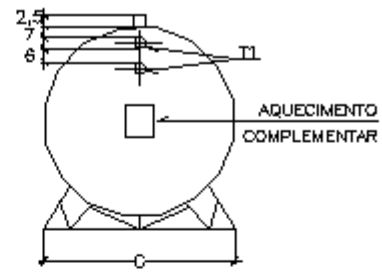
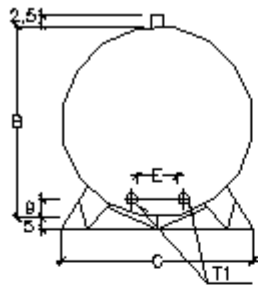
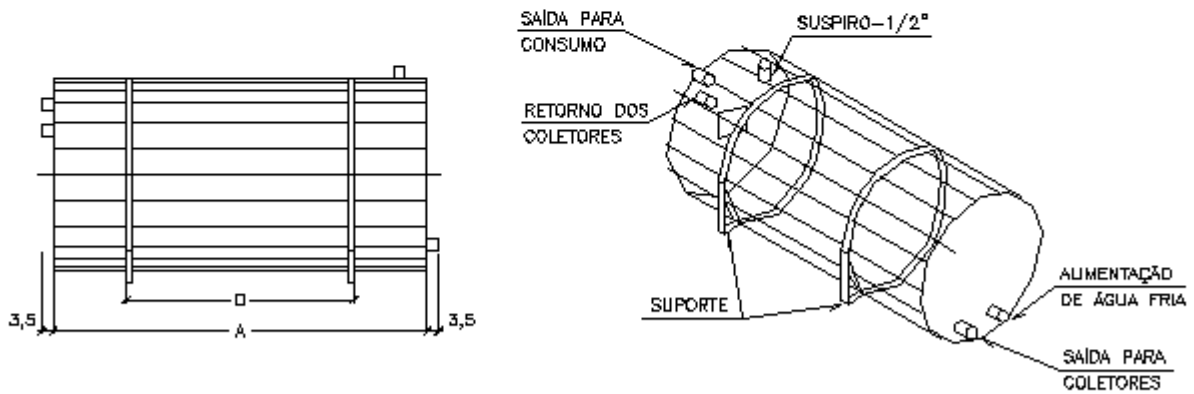


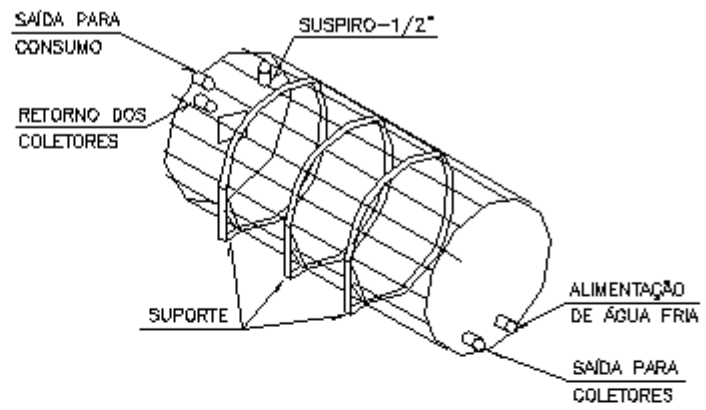
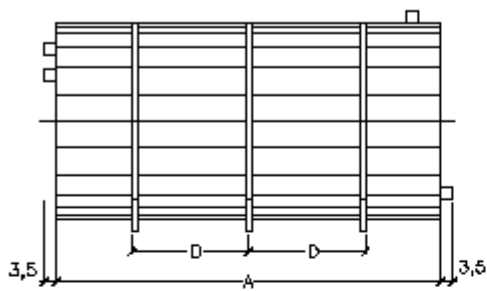
Reservatórios - Linha ATMC



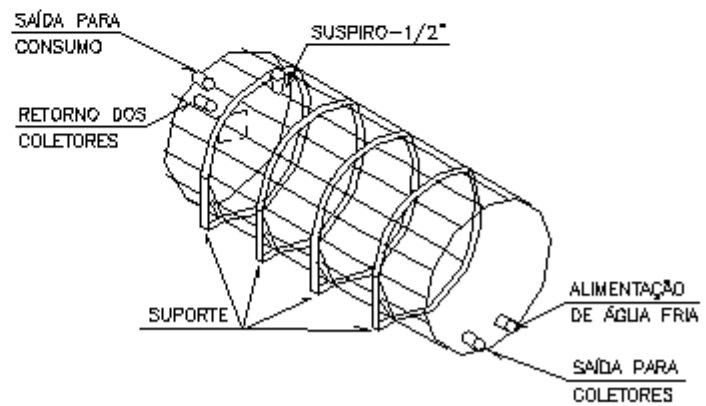
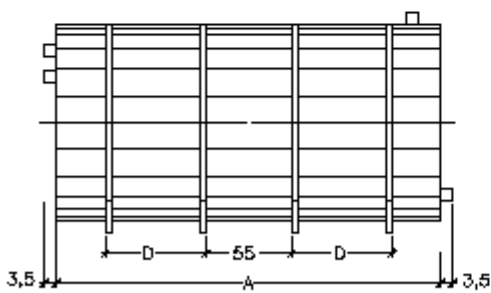
RESERVATÓRIOS ATMC-1-200 AQ A ATMC-1-1000 AQ



RESERVATÓRIO ATMC-2-1500 AQ



RESERVATÓRIO ATMC-2-2000 AQ



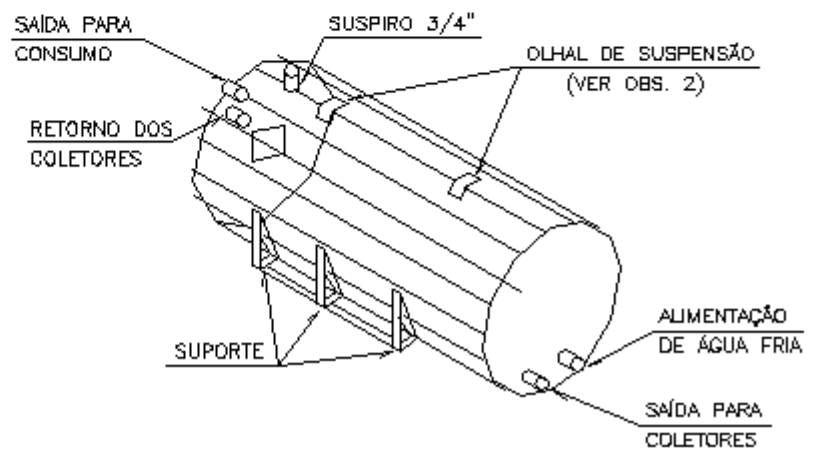
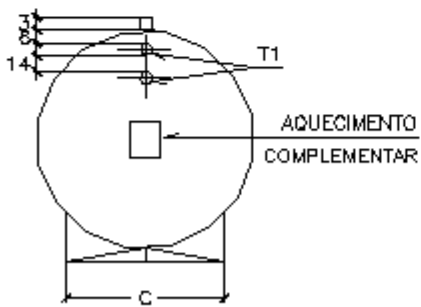
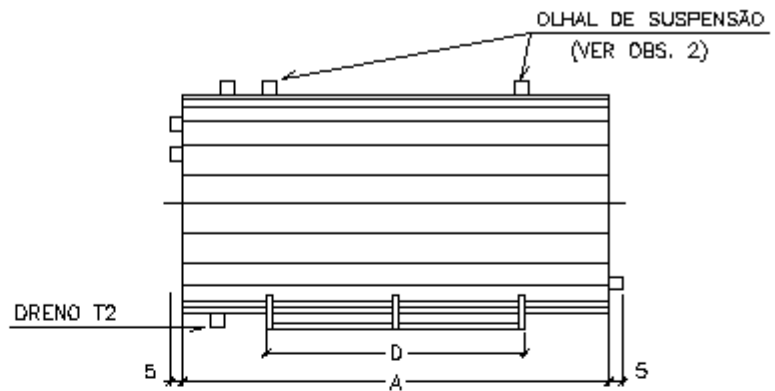
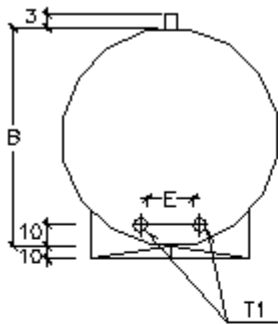
OBS:

1- DIMENSÕES EM CENTÍMETRO, SALVO INDICAÇÃO CONTRÁRIA.

2- CADA RESERVATÓRIO SERÁ DOTADO DE DOIS TERMOSTATOS.

MODELO	VOLUME (l)	DIMENSÕES (cm)					DN TUBOS DE CONEXÕES	PESO TEÓRICO VAZIO (Kg)	POTÊNCIA AQUEC. TENSÃO 220 V MONOF.
		A	B	C	D	E	T1		
ATMC-1-200 AQ	200	142	52	52	102	10	3/4"	21	1x2500W
ATMC-1-200 POP AQ	250	85	70,5	70,5	48	10	3/4"	21	1x2500W
ATMC-1-250 AQ	250	168,5	52	52	125	10	3/4"	23	1x2500W
ATMC-1-300 AQ	300	111	70,5	70,5	80	10	1"	27	1x2500W
ATMC-1-400 AQ	400	144	70,5	70,5	102	10	1"	31	1x2500W
ATMC-1-500 AQ	500	173,5	70,5	70,5	102	10	1"	34	1x2500W
ATMC-1-600 AQ	600	202,5	70,5	70,5	102	10	1"	38	1x2500W
ATMC-1-800 AQ	800	162	96	100,3	102	10	1"	50	1x3000W
ATMC-1-1000 AQ	1000	192	96	100,3	102	10	1"	59	1x4000W
ATMC-2-1500 AQ	1500	279	96	100,3	116	10	1 1/4"	130	2x2750W
ATMC-2-2000 AQ	2000	344	96	100,3	120	10	1 1/2"	165	2x3500W

Reservatórios - Linha RI



OBS:

1- DIMENSÕES EM CENTÍMETRO, SALVO INDICAÇÃO CONTRÁRIA.

2- SOMENTE EM RESERVATÓRIOS A PARTIR DE 2000 LITROS.

3- VARIÁVEL CONFORME PROJETO.

MODELO	VOLUME (l)	DIMENSÕES (cm)					DN TUBOS DE CONEXÕES		PESO TEÓRICO VAZIO (Kg)	POTÊNCIA AQUEC. TENSÃO 220 W
		A	B	C	D	E	T1	T2		
RI/5/1500 AQ	1500	236	105	79,5	115	11,5	1"	1"	130	VER OBS 3
RI/5/2000 AQ	2000	296	105	79,5	230	11,5	1"	1"	165	VER OBS 3
RI/5/2500 AQ	2500	299	115	87	230	14,2	1 1/2"	1"	180	VER OBS 3
RI/5/3000 AQ	3000	299	124	87	230	14,2	1 1/2"	1"	197	VER OBS 3
RI/5/3500 AQ	3500	309	139	100	230	14,2	1 1/2"	1"	232	VER OBS 3
RI/5/4000 AQ	4000	319	144	100,5	230	14,2	1 1/2"	1"	242	VER OBS 3
RI/5/4500 AQ	4500	319	154	100,5	230	14,2	1 1/2"	1"	276	VER OBS 3
RI/5/5000 AQ	5000	321	159	114	230	14,2	1 1/2"	1"	292	VER OBS 3